

KORG

ENTERTAINMENT SERIES



EC Series

C O N C E R T
P I A N O S



Phil Collins Uses KORG SG-ProX in his stage rig.

• H O M E



EC510



EC310



EC100H

FROM THE PROFESSIONAL STAGE TO YOUR HOME

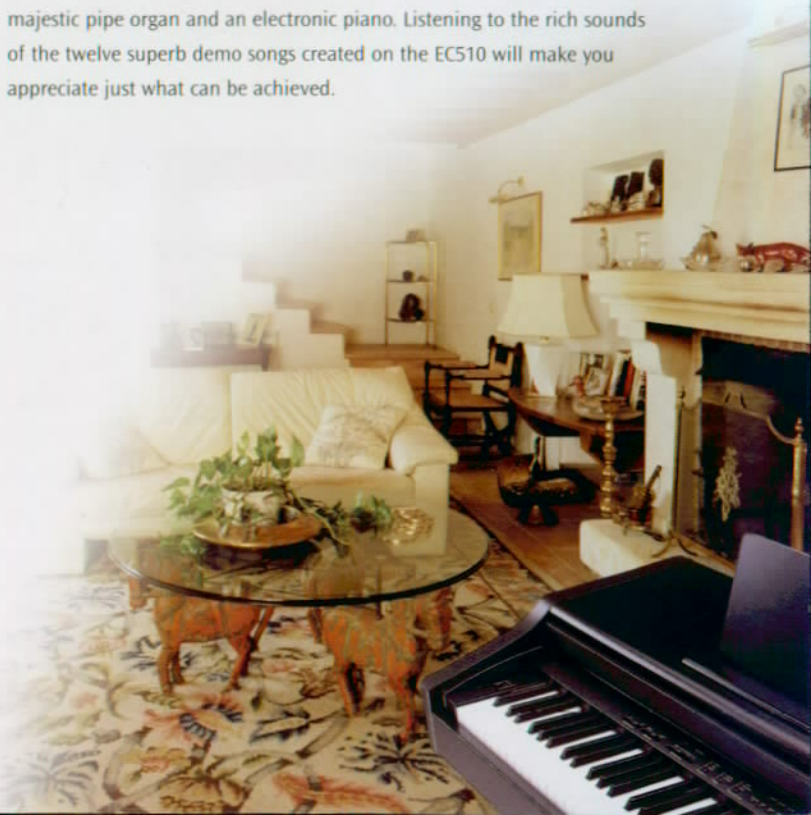
When the spotlight falls on them, professional entertainers across the world rely on the sound and feel of KORG keyboards. Even at the very highest level, stars from widely varying musical backgrounds play KORG keyboards. The sound quality and technological expertise that have made KORG electronic keyboards the choice of professionals for decades are now available for you to experience in your own living room.



The cornerstone of Korg's success is the authenticity of its piano sound, whether in dedicated stage pianos like the SG-ProX (as used by Phil Collins), the latest examples of the domestic piano range (shown above), or the broader voicings of the i-series keyboards (featured in the following pages).

The domestic piano range has recently been updated with new recordings using the latest sampling techniques and upgraded sound components to give a more natural sounding reproduction. Classically trained pianists will feel at home on the EC510 in particular with its completely authentic sound and weighted feel, yet it also allows those still developing their musical skills to acquire the best technique. The actions of the EC310/EC100H, although lighter, still have an authentic hammer feel. Nowadays computers are playing an increasingly important role in music education and recording, so the ability of all three models to connect to PC or Mac with ease is a feature that will appeal to students and computer-based musicians alike. Those who have not taken this step yet need not worry because the on-board recording capability of the EC510/310 really is in a class of its own. Whatever your ability, an easy-to-use sequencer with simple 'recorder' type controls enables you to play, store and modify a wide variety of music, played on a range of instruments which include a

majestic pipe organ and an electronic piano. Listening to the rich sounds of the twelve superb demo songs created on the EC510 will make you appreciate just what can be achieved.



EC Series

C O N C E R T
P I A N O S



EC510

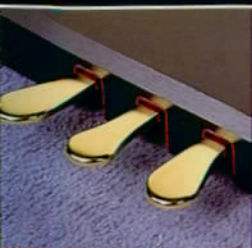
Classically trained pianists will feel right at home on the EC510 because of its completely authentic sound and weighted feel, yet it also allows those still developing their musical skills to acquire the best technique.



Precise key weighting

These instruments also include features to enhance your performance. For example, to help you play accurately in tempo, an on-board metronome with a sampled 'click' can emphasise any 'down' beat. You can add reverb to give the impression of playing in a concert hall or small room, transpose the pitch to match other instruments or select a different temperament – perhaps to play classical music exactly as it was originally composed.

Whether you choose to perform a classical masterpiece, a well-known rock song or your own composition created using the easy-to-use recorder, it will be heard to best advantage on the EC510's superior four-way speaker sound system with a powerful 2 x 40 watt amplifier (with bass reflex box) or on the EC310's advanced two-speaker system with a 2 x 30 watt amplifier.



EC310

The EC310 features the same world-class sound quality, and though smaller in size and less powerful, the EC310 is not an 'economy' model, but a fully featured variant of the EC510, for use wherever the fully weighted action and more powerful amplification is not required.



EC100H

Solid construction, stylish finish and a feature list that includes all the essentials makes the EC100H the most affordable of the concert piano range.



These instruments not only sound like traditional pianos they feel like traditional pianos, thanks to the precise weighting of the keys and the fidelity of digital sound technology. And with features including a rosewood-type PVC cabinet, a compact design, and an attractive lustre finish, they will also enhance the appearance of any room or venue. Sound quality was our top priority in the EC100H, but we also included the following features: 14 watt per channel stereo amplifier, six sound programs including a stereo piano, on-board effects and sequencing, metronome, two line inputs and two headphone outputs.

EC510 SPECIFICATIONS

- Keyboard: 88-note (weighted and hammer action keyboard – velocity-sensitive)
- Touch control: Light, Standard, Heavy
- Tone generator: AI² Synthesis System
- Polyphony: Max. 32 notes
- Sound programs: Piano (Stereo Sample), Electric piano, Harpsichord, Vibraphone, Organ, Strings
- Effects: Reverb, Chorus
- Recorder: 1 track, maximum 4,000 notes
- Tempo, Record, Play, Repeat
- Metronome: Tempo, Beat, Volume
- Controls: Master volume, Power switch, Transpose/Function, Touch, Voice selector, Tempo, Metronome, Demo, Brilliance, Tuning, Temperament
- Pedal controls: 3 Pedals: Sostenuto, Soft, Damper
- Connectors: Output (L/MONO, R), Input (L/MONO, R), Headphones x 2, MIDI (IN, OUT), PC I/F (TO HOST)
- Main amplifier: 2 x 40W
- Speakers: 4 – Bass reflex box (2 x 13cm + 2 x 5cm)
- Power supply: AC local voltage
- Power consumption: 110W
- Dimensions: 1,412 (W) x 500 (D) x 865 (H)mm
- Colour and grain: Dark wine-red rosewood
- Options: AG-001B/AG-002B
- Weight: 65.5kg

EC310 SPECIFICATIONS

- Keyboard: 88 note (hammer action keyboard – velocity sensitive)
- Touch control: Light, Standard, Heavy
- Tone generator: AI² Synthesis System
- Polyphony: Max. 32 notes
- Sound programs: Piano (Stereo Sample), Electric piano, Harpsichord, Vibraphone, Organ, Strings
- Effects: Reverb, Chorus
- Recorder: 1 track, maximum 4,000 notes
- Tempo, Record, Play, Repeat
- Metronome: Tempo, Beat, Volume
- Controls: Master volume, Power switch, Transpose/Function, Touch, Voice selector, Tempo, Metronome, Demo, Brilliance, Tuning, Temperament
- Pedal controls: 3 Pedals: Sostenuto, Soft, Damper
- Connectors: Output (L/MONO, R), Input (L/MONO, R), Headphones x 2, MIDI (IN, OUT), PC I/F (TO HOST)
- Main amplifier: 2 x 30W
- Speakers: 2 (2 x 13cm)
- Power supply: AC local voltage
- Power consumption: 90W
- Dimensions: 1412 (W) x 500 (D) x 847 (H) mm
- Colour and grain: Dark wine-red rosewood
- Options: AG-001B/AG-002B
- Weight: 60kg

EC100H SPECIFICATIONS

- Keyboard: 88-note (hammer action keyboard – velocity-sensitive)
- Touch control: Light, Standard, Heavy
- Tone generator: AI² Synthesis System
- Polyphony: Max. 32 notes
- Sound programs: Piano (Stereo Sample), Electric piano, Harpsichord, Vibraphone, Organ, Strings
- Effects: Reverb, Chorus
- Recorder: 1 track, 4,000 events
- Play, Record
- Metronome: Tempo, Beat, Volume
- Controls: Master volume, Power switch, Voice selector, Function, Metronome, Tuning, Demo
- Pedal controls: 2 Pedals: Damper or Sostenuto, Soft
- Connectors: Output (L/MONO, R), Input (L/M, R), Headphones x 2, MIDI (IN, OUT)
- Main amplifier: 2 x 14W
- Speakers: 2 (2 x 13cm)
- Power supply: AC local voltage
- Power consumption: 55W
- Dimensions: 1380 (W), 480 (D), 815 (H)mm
- Colour and Grain: Dark wine-red rosewood
- Weight 50.5kg

KORG

H O M E

L I V E

S T A G E

Produced for people who are serious about their music, KORG products have always balanced absolute attention to detail and sound quality with state-of-the-art electronics and stylish yet usable design.



i30



iS40



iS50



i40M

i-Series INTERACTIVE KEYBOARDS



iS40

Korg now brings the legacy of innovation and attention to musicians' needs which have always differentiated their keyboards in the professional arena, to the design of instruments for the home user. Four decades of technological advance results in the most user-friendly and sonically satisfying home keyboards yet. Whether for the professional stage performer or the home enthusiast, Korg's philosophy remains the same – a commitment to the best possible sound quality at an affordable price.

- Allows a high degree of expressivity in performance thanks to the Velocity and After-touch* control from the keyboard, an integrated Pitch-bend modulation controller and Sustain/control pedal inputs.
- Uses the world-acclaimed A1⁺ Synthesis system for extraordinary voicing realism.
- Dedicates 2 megabytes of PCM waveform memory* to the production of an extremely realistic piano sound (in addition to the 12 megabytes for the standard library of high-quality voices).
- Facilitates easy integration into the world of MIDI and computing via the built-in MIDI interface and PC host connector*.
- 320 factory sound programs of the highest quality (including a full General MIDI soundsheet) for the accurate reproduction of musical instrument timbres, plus 64 user-programmable programs. There is the same EDIT PROGRAM feature as found in a fully programmable Korg synthesiser. In addition the EASY EDIT PROGRAM enables fast access to effects and functions such as Vibrato int., VDF cut-off, VDF EG int., Attack time, Release time, VDA level, Velocity sens. and Effects balance, etc. right from the control panel.
- 14 different factory Drum kits (plus two user kits) for the authentic reproduction of many different musical styles in combination with the wide instrument library.
- Features 2 independent multi-effects processors for authentic hall and room reverbs and 47 other high-quality effects which can be edited as in a professional Korg synthesiser.



A1⁺ Synthesis System

i-Series INTERACTIVE KEYBOARDS

KORG's interactive music workstations feature the same sound quality as the keyboards used on stage by professionals worldwide but with the addition of automatic accompaniment provided by their 'Style' functions. The latest in the series, the i30, has more power than ever, putting professional sound and world-class accompaniment at your fingertips in any situation, from live performance to music production.

Korg's legendary M1 Music Workstation, perhaps the most played keyboard in history, set the standard by which professional workstations are judged. Korg expanded this concept with the i-Series, combining the quality of sounds developed for the PCM-based synths with an environment that makes the process of composition and arrangement as easy as possible for the user in

real-time. This has resulted in a series of keyboards that combine superb quality and instrument sounds, an extremely musical and user-friendly accompaniment section, and high-fidelity reproduction through the built-in sound systems of the iS series – truly an interactive musical environment!

The latest addition to this series offers more than ever before to the professional entertainer, with all the power and features of the i30 dedicated to making controlling the automatic backing during live performance as smooth and effortless as possible, leaving the performer free to concentrate on musical performance. Similarly, the versatility and sheer breadth of styles and sounds that the i30 features make composing and arranging a more fruitful and pleasurable process.

K O R G E N T E R T A I N M E N T S E R I E S

i 3 0 I N T E R A C T I V E M U S I C W O R K S T A T I O N



A multitude of new sounds

The i30's high-quality sound is produced by the Korg's world-acclaimed A1⁺ Synthesis System. With a gigantic 18 Mbytes of PCM data, the i30 is packed with high-quality sounds covering all instruments and musical needs. New piano sounds, drums, percussion, brass and guitar have been added to make the i30 the best-sounding of our i-Series keyboards. The 320 programs + 32 drum programs in the i30 include GM (General MIDI) compatible sound programs. The User area is RAM, allowing you to store 128 programs + 8 drum programs that include your favourite edits to sounds and drum kits along with your own programming efforts. Four completely independent digital multi-effect units are built-in, offering 47 effects variations (25 types). Since the real-time performance sounds and the automatic accompaniment sounds can use effects independently, you can apply the perfect effect for each sound or part.

A versatile, musical database

The i30's database of musical Styles provides an easy way to create professional-level backing parts. Each Style consists of 10 Style Elements, such as intros, fills, variations and more, with up to six musical parts per element.

The i30 provides a maximum of 176 Styles (128 Fixed + 48 User), more than any previous instrument in KORG's i-Series. Its internal memory can contain a staggering 1,760 different Style Elements, covering a wide variety of musical genres, from the latest musical trends such as techno, club, rock, and pop, to traditional music. High-quality Styles composed by top artists around the world ensure that the i30 is all you need to instantly create professional-level performances.

The i30's TouchView graphical user interface gives you control over many Style elements at the touch of a finger. Move easily between parts while you continuously record pattern data, or combine multiple Styles for instrumental parts, such as drums and bass, to create new user Styles. Up to 48 different new or edited Styles can be stored in the internal memory.

In addition, ten preset keyboard scales, including Arabic and Kimberger, are provided to match any style of music, and you can even create and memorise 32 user scales. This allows you to create the unique scales that are indispensable to traditional music, and store them in each Arrangement.



A1⁺ Synthesis System

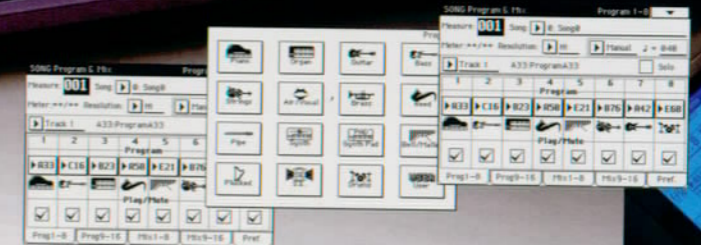
i30 i-Series

INTERACTIVE KEYBOARDS

Interactive Music Workstation



The i30's TouchView Graphical User Interface gives you control over many Style elements at the touch of a finger.



AI² Synthesis System

GENERAL MIDI ENTERTAINMENT

TouchView Graphical User Interface

KORG ENTERTAINMENT SERIES

i30 INTERACTIVE MUSIC WORKSTATION

The i30's Arrangements back you up

The i30's backing part 'Arrangements' make it easy for you to enjoy automatic accompaniment and speedy music production. While the Style specifies the musical genre and performance, an Arrangement is the equivalent of a band ensemble, specifying the sound played by each part, and volume, pan and effects settings. In addition to the 128 built-in Arrangements, you can create and store 128 Arrangements of your own.

Enhanced real-time performance control

The i30 lets you divide the keyboard into three parts (Main, Sub and Lower), and control each independently. Two sounds can be assigned to the high range, and one to the low range. Enrich your playing instantly by layering multiple sounds in the melodic range. Combinations of sounds for these parts and settings, such as split and octave, can be stored as a Keyboard Set in one of 64 memories, and recalled immediately at the touch of a front panel switch.

The Chord Sound function adds dynamic expression to your playing by allowing the chordal sound and the bass note to continue playing even when the automatic accompaniment is stopped. Plus it allows you to make detailed settings, such as independently specifying the program, volume and pan. The i30 also includes other convenient functions to bring your real-time playing up to a professional standard. In addition to its fade-in/out and ritardando/accelerando features, the i30 has an Ensemble function (with ten different types, such as Duet and Octave), which automatically adds an appropriate harmony to your single-note melodic playing.

Backing Sequence functions speed up music production

The i30's musically revolutionary Backing Sequence mode can be found only on KORG's interactive music workstations. Simply by playing a chord sequence, you can record a performance of up to six parts while switching variations and adding fill-ins when desired. Counter-melodies and other parts can be recorded on the five extra tracks, giving you a quick way to realise your musical ideas. Data that is created using the Backing Sequence function can be saved to disk in SMF format. Since the i30 also contains a full-fledged 16-track sequencer this SMF data can be edited in greater detail using the internal sequencer or an external sequencer.

Superb operation advantages

The i30 features many refinements which let you take quick and easy advantage of its advanced functionality. The display features Korg's large and easy-to-use TouchView Graphical User Interface. A Menu key provides one-touch access to the contents of each mode. Simply by touching the display, you can move to the desired setting page, making programming of sounds and backing parts easier than ever before.

The front panel provides nine sliders for adjusting the output volume balance. In conjunction with the Play/Mute keys, these sliders give you instant control of the melody and backing volumes even during a performance. Dedicated switches are also provided for Fade In/Out, Ritardando, Ensemble, and KBD Lock. By connecting an ECS foot controller or a simple footswitch, you can even select arrangements or control start/stop by pressing a footswitch.

i30 SPECIFICATIONS

- Sound Generation Method: AI² Synthesis System (Full Digital Processing)
- Sound Source: 64 voices, 64 oscillators (single oscillator in Program, Song and Song Play modes); 32 voices, 64 oscillators (double oscillator in Program, Song and Song Play modes); 2 x 32 voices, 2 x 32 oscillators (in Arrangement Play and Backing Sequence modes)
- Keyboard: 61 notes, with velocity and after touch
- Waveform Memory: PCM 18Mbytes
- Effects: 2 digital multi-effect systems, 25 types 47 effects (4 systems are available in Arrangement Play and Backing Sequence modes.)
- Programs: ROM 320 programs (64 x 5 Banks) + 32 drum programs, RAM 128 programs (64 x 2 Banks) + 8 drum programs
- Keyboard Sets: 64 x 1 bank
- Arrangements: ROM 128 (64 x 2 Banks) + RAM 128 (64 x 2 Banks)
- Styles: ROM 128 (64 x 2 Banks) + max. RAM 48 (48 x 1 Bank)
- Modes: Arrangement Play, Program, Backing Sequence, Edit Style, Song, Song Play, Disk, Global
- Backing Sequence: 10 songs
- Songs: 10 songs
- Memory Capacity for Backing Sequence and Song: max. 65,536 events
- Control Inputs: Damper, Assignable pedal /switch 1, 2, ECS, Computer interface (to host PC)
- Outputs: L/MONO, R, 3, 4, Headphones
- MIDI: IN, OUT, THRU
- Floppy Disk Drive: 3.5 inch 2DD/2HD
- Display: TouchView Graphical User Interface 320 x 240 dots
- Power Supply: AC local voltage
- Power Consumption: 20W
- Accessories: AC cord, Preload back-up disk IFD-00P, Music stand
- Dimensions: 1090mm (W) x 348mm (D) x 117mm (H)
- Weight: 14.2kgs

i30 OPTIONS

- ECS EXTERNAL CONTROLLER
- EXP-2 FOOT CONTROLLER
- XVP-10 EXP/VOL PEDAL
- KVP-002 VOLUME PEDAL
- PS-1 PEDAL SWITCH
- DS-1H DAMPER PEDAL
- HARD DISK
- AG-001B MIDI Driver software and computer interface cable for IBM PC and compatible
- AG-002B MIDI Driver software and computer interface cable for Macintosh

In addition to joystick control of sound modulation, etc., you can get even more real-time performance control by assigning desired functions to the two switches located above the joystick, in the same way as the ECS.

Easy computer compatibility

The i30's TO HOST (PC I/F) connector lets you connect it directly to your computer, making it an ideal choice for your desktop music system. (A separately sold cable and MIDI driver software AG-001/002 is required.)

The ever-broadening world of the i-Series

The i30 makes it easy for you to enjoy music from commercially-available Standard MIDI File (SMF) data. The Song Play function allows speedy playback directly from disk without having to load data into memory. Lyrics can be read on the i30 large display. Plus, a 1 GB internal hard disk can be installed for storage of Styles, Arrangements, Programs, Backing Sequences, SMF data and more. A model with pre-installed hard disk is also available as the i30HD. (For more information, please contact your local authorised KORG dealer.)



iS50



K O R G E N T E R T A I N M E N T S E R I E S

i S 4 0 / 5 0 I N T E R A C T I V E K E Y B O A R D S

iS40 SPECIFICATIONS

Keyboard: 61 notes with velocity and After-touch ● System: AI² Synthesis ● Tone generator: 32 Voices, 32 Oscillators ● Waveform memory: 14 megabytes PCM ROM ● Effects: 2 Stereo digital multi-effect systems, 47 effects – Edit effects ● Programs: 320 programs (including GM programs) 14 Drum kits (including 1 Arabian Drum kit), 64 user programs + 2 user Drum kits ● Styles: 128 Styles ROM + 16 Styles RAM ● Style controls: 4 Variations, 2 Fills, 2 Intros, 2 Endings, Synchro start/Synchro stop, Tap tempo, Reset, Fade in/out, Ensemble, Sustain, Octave transpose, Master transpose, Bass inversion, Split point, Single touch, Tempo lock, Memory lower/chord, Accompaniment volume, Accompaniment mute ● Arrangements: 128 Arrangements ROM + 64 Arrangements RAM ● Keyboard set: 15 Keyboard sets ● Song: MIDI file player format 0 and 1 (16 tracks) GM compatibility, Edit song – Record song – Jukebox function ● Backing sequence: 10, stored in RAM (40,000 events) ● Control inputs: Damper pedal, Assignable pedal/switch, ECS ● Outputs: Left/mono, Right, Phones ● Inputs: Left/mono, Right ● MIDI: In, Out, Thru – PC interface (To Host) ● Floppy disk: 3.5 inch 2DD/2HD (IBM PC 1.44 megabytes) ● Display: Backlit custom LCD ● Main amplifier: 2 x 14 Watt ● Power consumption: 60 Watt ● Speakers: 4 speakers (in Bass Reflex Box) ● Controls: After touch, Joystick, Dial ● Dimensions: W = 1110mm, D = 386mm, H = 142mm without music rest ● Weight: 12.9kg

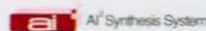
iS50 SPECIFICATIONS

Keyboard: 61 Notes with velocity ● System: AI² Synthesis ● Tone generator: 32 Voices, 32 Oscillators ● Waveform memory: 12 megabytes PCM ROM ● Effects: 2 Stereo digital multi-effect systems, 47 Effects – Edit effects ● Programs: 320 Programs (including GM programs), 14 Drum kits (including 1 Arabian Drum kit), 64 User programs + 2 User drum kits ● Styles: 128 Styles ROM + 16 Styles RAM ● Style controls: 4 Variations, 2 Fills, 2 Intros, 2 Endings, Synchro start/stop, Reset, Fade in/out, Ensemble, Sustain, Octave transpose, Master transpose, Bass inversion, Split point, Single touch, Tempo lock, Memory lower/chord, Accompaniment volume, Accompaniment mute ● Arrangements: 128 Arrangements ROM + 64 Arrangements RAM ● Backing sequence: 10 stored in RAM (40,000 events) ● Song: MIDI file player format 0 and 1 (16 tracks) – GM compatibility – Edit Song – Record Song – Jukebox function ● Control input: Assignable pedal/switch ● Outputs: Left/mono, Right, Phones ● MIDI: In, Out ● Floppy disk: 3.5 inch 2DD/2HD (IBM PC 1.44 MB) ● Display: Backlit custom LCD ● Main amplifier: 2 x 8 Watt ● Power consumption: 45 Watt ● Speakers: 2 speakers (dual cone speakers in Bass Reflex Box) ● Controls: Joystick ● Dimensions: W = 1110mm, D = 386mm, H = 142mm without music rest ● Weight: 11.5kg

The built-in sound systems of the iS40 and iS50 allow the home user to enjoy their professional capabilities to the full without additional equipment. Designed to reproduce the sound with the same sort of fidelity that professional PA systems would give in live concerts, all the necessary amplification and speakers are contained within the instruments themselves, making use in the home or elsewhere a simple 'plug and play' operation.

- 10 Song locations (with 40,000 event capacity) for full backing sequence treatments, plus 128 ROM style locations (fixed) and 16 user RAM style locations, to load new style data from disk.
- Integrates a 1.44MB PC-compatible floppy disk drive for exchanging program and sequence data and the loading of standard MIDI files (types 0 and 1) into the 16-track GM-compatible File Player.
- Powerful high-quality sound projection thanks to the 2 x 14Watt* amplifier and four speaker system housed in a bass reflex box.
- Operating systems can be upgraded from floppy disk directly into Flash-ROM so that features and enhancements are added.
- Accompaniment volume slider. Thanks to this slider, the user will be able to balance Style and Real time parts, according to his/her taste.
- Edit song mode – the user can load, modify and save again (in format 0 or 1) the standard MIDI file. Moreover the user can also record a song with the internal 16 tracks.
- Song play mode: a song or a list of songs can be played directly from disk without preloading, this is a very fast and user-friendly procedure.
- Lyrics function.

* iS40 Only



i40M i-Series

INTERACTIVE
MUSIC MODULE



GENERAL MIDI
AI² Synthesis System



K O R G E N T E R T A I N M E N T S E R I E S

i 4 0 M I N T E R A C T I V E M U S I C M O D U L E

i40M SPECIFICATIONS

- System: AI² Synthesis ● Tone Generator: 32 Voices, 32 Oscillators ● Waveform memory: 14 Megabytes PCM ROM ● Programs: 320 Programs (including GM Programs), 14 Drum kits – 64 User Programs + 2 User Drum kits ● Effects: 2 stereo digital multi-effect systems, 47 effects – Effects Edit. Dedicated DSPs for the MIC/Guitar input
- Vocal/Guitar section: Input source: Microphone, Guitar, Line (Mono). Controls & indicators: Volume, A/B/C assignable controls, Signal & clip indicator (LED). Vocal mode: 4 background harmony voices, MIDI/Sequencer harmony channel. Vocal effects: Compressor, Tone controls (EQ), Chorus/Delay, Reverbs (2 effects), Guitar effects: Drives (3 effects), Tone controls (EQ), Noise reduction, Cabinet resonator, Modulation (7 effects), Ambience (3 effects) ● Styles: 128 ROM Styles + 16 RAM Styles ● Style controls: 4 Variations, 2 Fills, 2 Intros, 2 Endings, Synchro start/stop, Tap tempo, Reset, Fade in/out, Bass inversion, Single touch, Tempo lock, Memory lower/chord.
- Accompaniment volume, Accompaniment Mute ● General controls: Master Volume, Ensemble, Sustain, Octave transpose, Master transpose, Split point, Tracks volume. ● Arrangements: 128 ROM Arrangements + 64 RAM Arrangements ● Keyboard set: 15 Keyboard Sets ● Song: MIDI File Player format 0 and 1 (16 tracks), GM compatibility, Edit Song – Record Song – Jukebox function ● Backing sequence: 10, stored in RAM (40,000 events) ● Control inputs: Damper Pedal, Assignable pedal/switch, ECS ● Outputs: Left/Mono, Right, Phones ● Inputs: Mic/Guitar/Line Input – Input Gain control ● MIDI: In 1, In 2, Out, Thru. ● Floppy Disk: 3.5 inch 2DD/2HD (IBM PC 1.44 MB) ● Display: Backlit custom LCD with Lyrics function ● Power consumption: 23 Watt ● Dimensions: W = 400 mm, D = 287 mm, H = 87 mm ● Weight: 4.3kg

i40M OPTIONS

- Hard Disk ● ECS controller ● EXP-2 foot controller ● XVP-10 exp/volume pedal ● PS-1 footswitch ● DS-1 damper pedal

The Korg i40M has been designed around the needs of today's working solo performer who requires high-quality accompaniment. With Korg's world-renowned Sounds and Styles, a powerful arranger and a 16-track sequencer, it is all you need to make great music. A Vocal/Guitar section, with dedicated multi-effects and a vocal harmonizer, gives you the power of a whole set of multi-effect units. Direct from disk playback of Standard MIDI files is also a key feature. The Korg i40M is devoted to the one-man band musician, singing, playing guitar and/or MIDI accordion with maximum ease.

- Uses the world-acclaimed Korg AI² synthesis system for extraordinary voicing realism.
- 320 factory sounds of the highest quality (including a full General MIDI soundset) for the accurate reproduction of musical instrument timbres, plus 64 user-programmable programs. There are the same EDIT PROGRAM features as found in a fully programmable Korg synthesiser. In addition the EASY EDIT PROGRAM enables fast access to effects and functions such as Vibrato Int., VDF cut-off, VDF EG int., Attack time, Release time, VDA level, Velocity sens. and Effects balance etc., right from the control panel.
- Dedicates 2 megabytes of PCM waveform memory to the production of an extremely realistic piano sound (in addition to the 12 megabytes for the standard library of high-quality voices).
- 14 different factory Drum Kits (plus two user kits) for the authentic reproduction of many different musical styles plus an extensive world-class sound library, heard in live shows and on CDs from the greatest artists.
- 128 high-quality ROM Styles and an extensive RAM Style library (16 User RAM locations are ready for new Styles to be loaded via disk), all composed by top artists including selections from pop, rock, jazz and ethnic music. Legendary high-quality Korg Styles ensure the i40M is always up-to-date.
- Easy Song composition, by means of the Backing Sequence feature: simply start playing with Styles, and your live

performance will be recorded in a complete Song. Counter-melodies and other parts can be recorded on eight additional tracks. The resulting Backing Sequence can be edited and later converted to a SMF.

- Easy integration into the world of MIDI (dual MIDI IN ports), with ready-to-use factory MIDI settings. Just select the right MIDI setting, and you are ready to connect a Digital Piano, MIDI Accordion, or MIDI Keyboard.
- Direct-from-disk playback of SMFs (format 0 and 1), for the fastest possible operation on stage. You can play back one Song, all the Songs in a disk, or create your own playback list using the Jukebox function. With the Lyrics Function, lyrics from most of the available SMF formats can be shown on the i40M's wide LCD display.
- Features two independent multi-effect processors for authentic hall and room reverbs and 45 other high-quality effects which can be edited as in Korg professional synthesisers.
- Features additional effects processors for vocal and guitar processing, including a harmoniser that adds four-part harmony to singing from MIC input. In Guitar mode, a complete suite of multi-effects, including compression, distortion, chorusing reverb and amp simulation are simultaneously available.

With its compact and elegant design, and features to match, the i40M is the ideal companion for the solo performer.



KORG.net

i-Series SOUND LIBRARY

Whether you are a novice or a professional musician, the i-Series sound library has all the sounds you need. A wide variety of musical genres, from rock to reggae, jazz to jungle or whatever your musical requirements, we've got it all! Compatible with the entire i-Series: from the ancestor i3 to the latest i30.



KORG.net



KORG.net i-Series



Styles and Arrangements compatible with iS40 – iS50 – i30. Each disk contains 8 styles + 16 arrangements.

The keyboard power can be misused on the basis of the great number of musical genres one can choose from. KORG offers a very wide range of titles compatible with the entire i-Series: from the ancestor i3 to the latest i30.

020067 IS 01 – Latin 1

Cumbia, Merengue, Rumba, Calypso, Gipsy, Meneaito, Bayon, Limbo.

020068 IS 02 – Funky

Funky 1.2.3.4. Funk 1.2.3.4.

020069 IS 03 – The XX Century Dance

Imagination, Frankie, Snap, Corona, Dance '60, Dance '70, Disco '80, Disco '90.

020070 IS 04 – Rap & Reggae

USA Rap, UK Rap, Jo'Rap, Art 31 Rap, Bob Marley 1, Bob Marley 2, UB40, Reggae Night.

020071 IS 05 – 90s Dance

Hit-House, John, Arabian House, U2, Alexia, R. Miles, Garden, Living Joy.

020072 IS 06 – Rock Around The World

U2 Groove, Irish Rock, Red Hair, Gloria, Canadian Rock, Blues Funk, Slow Pop, 16 Beat Pop.

020073 IS 07 – Traditional 1

Valzer, Polka, Fox Trot, Benguine, Valzer 2, Polka 2, Mazurka, Tango.

020074 IS 08 – Big Band

Med. Swing, Boogie, Slow Swing, Big Band 1, Slow Big Band, Big Band 2, Big Band 3.

020075 IS 09 – Latin 2

Paso doble, Cumbia, Samba, Merengue, Cha Cha, Bossa Mambo, Samba 2.

020076 IS 10 – 8 & 16 Beat 1

8 Allegro, 8 Disco Beat, 8 Medium Beat, 8 Medium Disco, 16 Beat John 1, 16 Beat John 2, Honky John, 8 Beat John

020077 IS 11 – Traditional 2

Benguine, Fox Trot, Moderato, Triplet, Samba, Zibaldone, Wien Waltz, Zibaldone 2.

020078 IS 12 – Italian 60s & American 50s

Italian 6/8, Rumba Rock, Hully Gully, Twist Italy, Rock 1, Rock 2, Boogie 2, Shuffle.

020079 IS 13 – Fusion, Soul, R & B

Jaco, Modern Fusion, Fusion Funk, Slow Fusion, R&B 2, R&B 3, Soul, Rock 2.

020080 IS 14 – Jazz & Country

Jazz Waltz, Dorian, Swing Shuffle, Big Band 2, Country 3/4, Achybreak, Shuffle City, Long Cool WM.

020081 IS 15 – People Dance

Tiki Dance, Gipsy Dance, Woolf Dance, Medley Dance, Mod. Swing, Slow Rock 2, Folk Ballad, Gipsy Kings.

020082 IS 16 – 8 & 16 Beat 2

IK 16 Beat 1, IK 16 Beat 2, IK 16 Beat 3, IK 8 Beat, 8 Beat, 8 Medium Beat, 16 Beat, Eight Rock.

020083 IS 17 – Eros & Sugar Italian Singers Vol. 1

Terraprom, Adesso Tu, Cosevita, Bella Cosa, Rispetto, Senza 1 Donna, Diamante, Funky Gallo.

020084 IS 18 – Piano & Disco Bar

Slow Style, Begin, Slow Rock, Slow Band, Jamiro 1, Space, Jamiro 2, Jamiroquai.

020097 IS 19 – HIP & NEW POP

BLUR, OASIS, ENGLPROPOK, VERVE, BACK STREET, AMER PAPHOP, HDR SOFTHIP, SLW & FST HHP.

020098 IS 20 – THE MUSIC OF NAPLES

Styles: MAMMETA, LUNA, CHELLA, REGINE', NAPOLI 1, NAPOLI 2, NAPOLI 3, NAPOLI 4.

020099 IS 21 – Traditional 3

VALZER 1, POLKA 1, MAZURKA 1, TANGO, VALZER 2, VALZER LENTO, TARANTELLA, TANGO, MAZURCA 2, POLKA 2.

020100 IS 22 – Traditional 4

VALZER, MAZURKA, POLKA, TARANTELLA, TOURNEE LA TETE, GP BAROQUE, GP BOLERO, GP MUSETTE.

020101 IS 23 – PIANOBAR STYLES

LUCIO, EROS, GERARDINA, EROS 2, CATTIVI, RAINERS, HAIR, ALIAS.

020102 IS 24 – ITALIAN SINGERS VOL. 2

BATTISTI & DANIELE, BATT 1, BATT 2, BATT 3, BATT 4, PINO 1, PINO 2, PINO 3, PINO 4.

020103 IS 25 – BEAT & ROCK

SLOW 8 BEAT, SLOW 2, ENIGMA, ROCK GB, 8 BEAT 808, 16 BEAT 808 I, 16 BEAT SHUFFLE 808, 16 BEAT 808 III.

020104 IS 26 – ROCK & BLUES

020105 IS 27 – FUNKY & DISCO DANCE

020106 IS 28 – OLD & NEW ROCK

020109 i30 PLANET

32 i30 RAM styles converted to iS40/iS50. iS40/iS50 ONLY.

If you want to bring a fresh individualism to your music, the Pattern Factory provides excellent support for programming new songs. For each of the genre titles below you'll find patterns grouped together according to the instrument used, bass guitar, drums, etc. Simply introduce the patterns into your tracks for quick and easy new songs. The use of midi instruments to create the patterns, such as guitars, bass guitars, drums, etc. will bring a 'human feel' to your sequences. Pattern Factory is compatible with the i30 or any full spec 16-track sequencer.

Each title in the Pattern Factory comes complete with a CD-ROM 'Click and Play' Quick Time tutorial in a choice of five languages: English, French, German, Italian and Spanish. If you haven't used Pattern Factory before this will quickly show you how to get the best from this product.

| 040005 | DRUMS & GUITARS |
|---|-----------------|
| More than 400 measures of rhythmic patterns to quickly create drums and guitar tracks of a tune in Funky, 8 & 16 Beats, Dance of the 1970s, Rock and other musical styles. Includes a CD-ROM Click & Play, a fully comprehensive guide which shows how to use this product to its full potential. | |
| 040002 | TRANCE |
| 040008 | TECHNO |
| 040011 | GARAGE |
| 040012 | HIP-HOP |
| 040013 | JUNGLE |
| 040015 | ROCK |
| 040016 | LATIN |

Patterns created for these musical genres, programmed as follows:
70 Drum Loops divided into patterns available with all sorts of active percussion instruments and with their combinations (e.g. Drum + Charleston Cymbal, Drum + Claps, Charleston Cymbal + Claps + Tenor Drum, etc.).

25 Drum Loops Fill-in

30 Lines of bass accompaniment with C and G as main chord and with two turns, proposed in the major, minor and seventh versions.

30 Accompaniment lines including Piano, Synth, Brass, Stringed instrument sections with C and G as main chord and with two turns, proposed in the major, minor and seventh versions.

1 Demo song

Suitable for programming songs very quickly. These titles includes the CD-ROM 'Click & Play', a fully comprehensive guide for PC or MAC which shows how to use this product to its full potential.

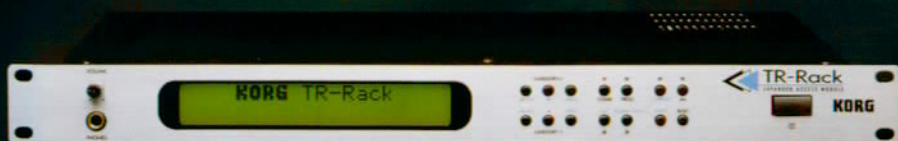


Reference numbers and sound styles/packaging may vary from country to country.

KORG Introducing the professional range



◀ **TRINITY**
MUSIC WORKSTATION DRS
SERIES



◀ **TR-Rack**
EXPANDED ACCESS MODULE



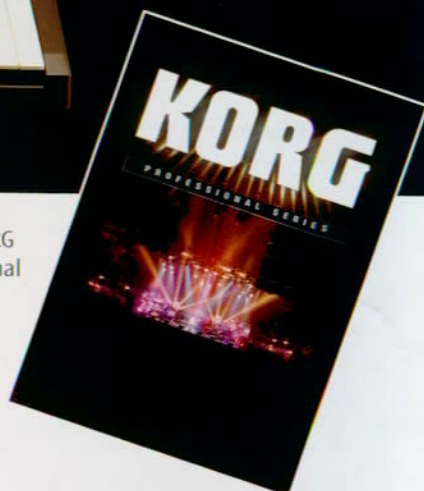
Z1
MULTI OSCILLATOR SYNTHESIZER



N364
N264



N5EX
MUSIC SYNTHESIZER



KORG

KORG INC. 15-12 Shimotakaido 1-Chome, Suginami-Ku, Tokyo, Japan.
KORG USA INC. 316 South Service Road, Melville, NY 11747, USA.
KORG (UK) 9 Newmarket Court, Kingston, Milton Keynes MK10 0AU, UK.
KORG Italy s.p.a. - Via Cagiata 85, 60027 Osimo (AN), Italy.

See the rest of the KORG
range in our Professional
Series brochure

NOTICE: Korg products are manufactured under strict specifications and voltages required by each country. These products are warranted by the Korg distributor in the country where they are purchased. Any Korg product not sold with a warranty card or carrying a serial number disqualifies that product sold from the manufacturer's/distributor's warranty and liability. This requirement is for your own protection and safety.

- Specifications and features are subject to change without notice.
- Colour reproduction in printed materials may differ from the actual product appearance.
- Some products may not be available in every country. Please consult the KORG dealer nearest you for availability.