

### **PRECAUTIONS AGAINST STATIC ELECTRICITY**

Presence of static electricity may cause POLY-800 to work improperly. Connect the instrument to the amplifier and/or other devices before turning the Power Switch ON.

In case of malfunction, refer to page 38 to re-load the data.

### **VORSICHTSMASSNAHMEN GEGEN STATISCHE ELEKTRIZITÄT**

Statische Elektrizität kann dazu führen, daß der POLY-800 nicht richtig funktioniert. Anschlüsse an den Verstärker und/oder andere Geräte nur dann vornehmen, wenn der Netzschalter des Instruments ausgeschaltet ist.

Bei Nichtfunktionieren auf Seite 38 nachlesen und die Daten nochmals eingeben.

### **PRECAUTIONS CONTRE ELECTRICITE STATIQUE**

Il y a des cas que le POLY-800 fonctionne mal à cause de la électricité statique. Pour éviter ce cas, ne mette jamais l'interrupteur à la position "mise en fonction" avant que le POLY-800 ne soit bien connecté à un ampli ou autre.

Si une erreur de fonction apparaît, recharger des donnée au POLY-800 en se référant à la page 38.

### **PREVENCION DE ELECTRIFICACION ESTATICA**

La electrificación estática trafa la malfunción del POLY-800. Debe conectarlo al amplificador u otros aparatos antes que se alimente.

En caso de la malfunción, debe cargar los datos de nuevo en referencia de página 38.

### Connection Chart



### Connection Chart

1. DC 9V terminal for operation on AC current using exclusive adaptor.
2. Headphone jack.
3. R/L outputs permit stereo connection to bring out stereo chorus effect. L/MONO is for mono connection.
4. Program write enable/disable switches allow independent program storage for synth sounds and sequencer data.
5. Tape interface for storing data on cassette tape.
6. Program Up jack lets you advance the program number by pressing a foot pedalswitch (PS-1).
7. MIDI interface port for connection to other MIDI equipped instruments, control devices, and computers.

### SPECIFICATIONS ■ KEYBOARD

49 keys (C-C), Normal Color/Reverse Color  
 ■ VOICE: 8 Voice (WHOLE mode)  
 4 Voice (DOUBLE mode) ■ DCO1: Octave (LOW, MID, HIGH), Waveform (S, T), 16' 8' 4' 2' (ON OFF) Level adjustment ■ DCO2: Octave (LOW, MID, HIGH), Waveform (S, T), 16' 8' 4' 2' (ON OFF) Level adjustment, Interval (Perfect 1st—Perfect 8th), Detune (-20 cent MAX)  
 ■ DCO Mode: (WHOLE, DOUBLE)  
 ■ NOISE: Level adjustment (White noise) ■ VCF: Cutoff, Frequency adjustment, Resonance adjustment, Keyboard Track (OFF, HALF, FULL), Adjustment of EG reception, Switch of EG mode (SINGLE, MULTI) ■ CHORUS: ON/OFF ■ DEGI (FOR DCO1): Attack time, Decay time, Break point level, Slope time, Sustain level, Release time. ■ DEG2 (FOR DCO2) Attack time, Decay time, Break point level, Slope time, Sustain level, Release time. ■ DEG3 (FOR VCF & NOISE): \*Attack time, Decay time, Break point level, Slope time, Sustain level, Release time. ■ MG: Frequency adjustment, Delay time, DCO intensity, VCF intensity. ■ MIDI: Receive Channel (1-16 cha.), Program change

(ENABLE/DISABLE), Sequencer clock (INT, EXT) ■ TUNE: ±50 cent  
 ■ POWER: Off, Volume adjustment  
 ■ JOYSTICK: X direction (Pitch bend), +Y direction (DCO modulation)—Y direction (VCF modulation)  
 ■ BEND: Pitch bend adjustment (±700 cent MAX) ■ SEQUENCER: START/STOP, STEP, SPEED (Slow—Fast) ■ KEY ASSIGN MODE: Poly, Chord memory, Hold ■ PROGRAMMER: Number select button (1-8), Program/Parameter Bank Hold, Value (Up, Down), Write switch  
 ■ INDICATOR: Program display, Parameter number display, Value display, Bank hold display, Edit display ■ TAPE INTERFACE: Save, Load, Verify, Cancel ■ INPUT JACK: FROM TAPE (HIGH/LOW), PROGRAM UP ■ OUTPUT JACK: Output (R, L/MONO), Phones TO TAPE. ■ TAPE SWITCH: ENABLE/DISABLE ■ WRITE SWITCH: Program (ENABLE/DISABLE) Sequencer (ENABLE/DISABLE) ■ MIDI JACK: IN, OUT ■ DC9V: AC adapter jack  
 ■ STRAP PIN: 2 ■ DIMENSIONS: 780(W) x 286(D) x 87.6(H)mm  
 ■ WEIGHT: 4.3kg (including battery)  
 ■ ACCESSORY: Pre-load data tape, battery (UM-2 x 6), Shield cord (2.5m x 1), AC adapter

### OPTIONS



\*Specifications and features are subject to change without notice for further improvement.

### NOTICE

Korg products are manufactured under strict specifications and voltages required by each country. These products are warranted by the Korg distributor only in each country. Any Korg product not sold with a warrantee card or carrying a serial number disqualifies the product sold from the manufacturer's/distributor's warrantee and liability. This requirement is for your own protection and safety.

# KORG®

KEIO ELECTRONIC LABORATORY CORP.  
 15-12, Shimotakado 1-chome, Sugnam-ku, Tokyo Japan. Printed in Japan

# Another KORG Breakthrough in Polyphonic Synthesizers

# KORG POLY-800

PROGRAMMABLE POLYPHONIC SYNTHESIZER



# KORG

KEIO ELECTRONIC LABORATORY CORPORATION

**“ONE OF THE MOST  
VERSATILE MUSICAL INSTRUMENTS  
I’VE PLAYED IN YEARS.”**



**Chuck Leavell**  
On Record and Tour with the Rolling Stones

The Greatest Artist Plays the Best.  
**KORG POLY-800**  
PROGRAMMABLE POLYPHONIC SYNTHESIZER

# World's First Affordable 8-Voice 64-Program Polyphonic Synthesizer



## A Close Look at POLY-800 Features

### 1 VOLUME

Also turns on power.

### 2 TUNE

Slider provides easy tuning to other instruments.

### 3 JOYSTICK

Left & right motion bends the pitch of any notes played. Up & down motion produces vibrato and filter modulation effects.

### 4 BEND

Sets maximum pitch bend depth.

### 5 SEQUENCER

### J VALUE

Shows value for selected parameter; can be changed by Up and Down buttons.

### K BANK HOLD

Allows quick single-button access to programs or parameters within the same bank.

### L DISPLAY

6 large LED digits provide complete data read out.

### 8 PARAMETER TABLE

Displays all POLY-800 program parameters (Waveform, Cutoff frequency, etc.) which are used to create different

## 6 Parameter Digital Envelope Generators for Most Flexible Articulation

### Newly Developed ADBSSR System

See graphs below.

### 1 ATTACK

Rate at which the maximum peak is reached.

### 2 DECAY

Rate used to travel from the attack peak to the Break Point level.

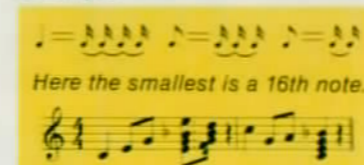
### 3 BREAK POINT

## Built-in Polyphonic Sequencer for Automatic Play

### Writing Sequences

Determine smallest time value. This will be the value of one STEP.

Example:



- 1) Set rear panel Sequencer WRITE switch to ENABLE position.
- 2) Press START/STOP.

## Create Original Sounds Quickly & Easily

- 1) Choose a program from the memory that is reasonably close to the sound you want.
- 2) Press PROG/PARA to select the Parameter mode (numbers appear in Parameter no. and Value displays).
- 3) Select a Parameter Number from the Parameter Table and enter it using the eight number buttons (for example, VCF Cutoff is 41).

ATTACK	DECAY	BREAK P.	SLOPE	SUSTAIN	RELEASE	ATTACK	DECAY	BREAK P.	...
51	52	53	54	55	56	61	62	63	64
31	31	31	31	31	31	31	31	31	...
0	0	0	0	0	0	0	0	0	...

Parameter name  
Parameter number  
Value range  
Synthesizer section

- type of record jack.
- 2) Set tape recorder volume to medium level.
- 3) Set rear panel TAPE and WRITE switches to ENABLE positions.
- 4) Press front panel LOAD button.
- 5) Start tape playback.
- 6) Display will show "Good" if data loading was successful.
- 7) Stop tape and set rear panel TAPE and WRITE switches to DISABLE positions.
- 8) If display shows "Err" (for error), press CANCEL and try again with tape volume at a different level. Repeat steps 3-5.

Built-in polyphonic sequencer stores and performs up to 256 notes and also includes MIDI control capabilities.

### 6 KEY ASSIGN MODES

#### A POLY

Provides 8- and 4-voice polyphonic performance.

#### B CHORD MEMORY

Lets you play parallel harmonies using only one key, and also provides monophonic bass and solo articulation.

#### C HOLD

Provides sustained "Hands Off" sound.

### 7 PROGRAMMER

Microprocessor technology allows 64 different programs to be stored, recalled, edited & saved on tape, as desired.

#### D PROGRAM/PARA

Alternates between program select and parameter select modes.

#### E SAVE

Stores "libraries" of sound programs and sequencer data onto cassette tape for later use.

#### F LOAD

Recalls sound programs, sequencer data, or both from cassette tape into the Poly-800.

#### G VERIFY

Checks tape data against internal memory to insure data is recorded correctly.

#### H CANCEL

Cancels current tape operation.

#### I WRITE

Press to memorize a program.

programmed sounds.

#### M DCO 1 & 2

Eight digitally controlled oscillators with individual Octave, Waveform, 16'-2' Harmonics and level parameters provide wide range of basic sounds. DCO2 INTERVAL and DETUNE parameters provide tracking harmonies and fat sounds.

#### N MODE

Selects Whole (8 voice, one DCO per voice) or Double (4 voice, two DCO's per voice) playing modes.

#### O NOISE

White noise source with separate EG.

#### P VCF

Equipped with new 24-decibel-per-octave filter circuitry for total tonal control. Multiple or single triggering, keyboard tracking, EG intensity & reverse polarity selection.

#### Q CHORUS

Thick stereo chorus may be programmed into any sound.

#### R DEG 1, 2, 3

Advanced 6 part digital envelope generators provide separate "layering" control of DCO'S 1 & 2, VCF & Noise.

#### S MG

Modulates the DCO's and/or VCF to create delayed vibrato, wah-wah, and other effects.

#### T MIDI

Lets you select how the Poly-800 is controlled when it's connected via the built-in MIDI port to MIDI compatible keyboards, computers, or other equipment.

Level at which the Decay rate changes to the Slope rate.

#### 4 SLOPE

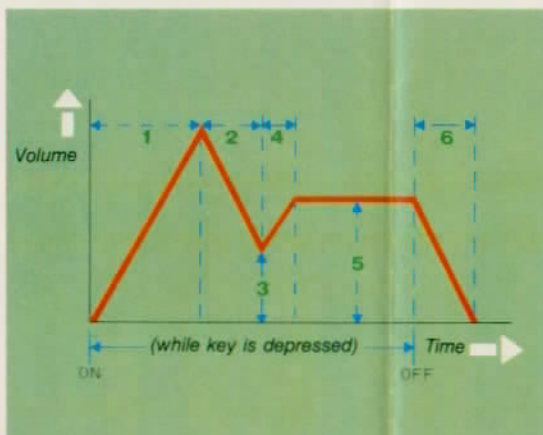
Rate used to travel from the Break point to the Sustain Level. With Sustain higher than Break point, Slope is a second attack; otherwise slope is a second decay.

#### 5 SUSTAIN

Sound maintains at this level following Attack, Decay & Slope for as long as key is depressed.

#### 6 RELEASE

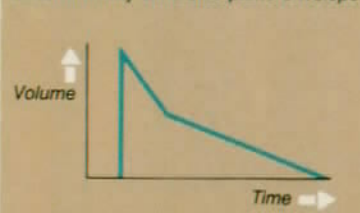
Rate at which the sound fades away after the key is released.



Second attack simulates envelope of compressed guitar.



Second decay simulates piano envelope.



### One-Touch Program Selection

- 1) Press PROG/PARA, if needed, so Parameter Display shows "P", "C" or "H".
- 2) Enter the desired 2 digit Program Number on the 8 Number Buttons.
- 3) Press BANK HOLD (LED dot turns on). Now, select any program in that bank by pressing a single Number Button.

- 4) Edit the parameter Value using the UP and DOWN buttons.
- 5) Repeat steps 3 and 4 to change other parameters until you've created the sound you want.
- 6) To make sounds permanent, you must use the red WRITE button and rear panel Program WRITE Enable switch.

### Comes with Fantastic Sound Data Tape

#### Sound Data Tape

Using an ordinary cassette recorder you can load data for 64 original sounds. A free sound data tape is included with your Poly-800.

#### How to load data from tape to Poly-800



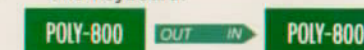
- 1) Connect rear panel FROM TAPE jack to tape recorder output jack. Set HIGH (earphone) / LOW (line out) switch according to

### MIDI Equipped for Interfacing with Your Computer

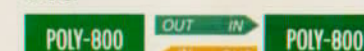
The Musical Instrument Digital Interface (MIDI) allows different types of musical instruments and computers to talk to each other, as a result of an agreement between many manufacturers. The Poly-800 MIDI can send and receive note data, joystick data, program changes and sequencer control signals.

#### Examples:

- 1) Controlling two synthesizers from one keyboard.



- 2) Interactive control between two synthesizers.



- 3) Synthesizer controlled by sequencer or MIDI-equipped personal computer.



**AMAZING SOUNDS AND UNBELIEVABLE COST/PERFORMANCE. THE KORG POLY-800 GIVES YOU 8 VOICES, 64 PROGRAM MEMORY, FULL EDIT FUNCTIONS, TAPE INTERFACE, POLYPHONIC SEQUENCER, DUAL DIGITAL OSCILLATORS, TRIPLE 6-PARAMETER DIGITAL ENVELOPE GENERATORS, AND MORE IN A SYNTHESIZER LIGHT ENOUGH TO WEAR ON A SHOULDER STRAP. TRY IT TODAY—THE KORG POLY-800.**

# KORG POLY-800

PROGRAMMABLE POLYPHONIC SYNTHESIZER



# World's First Affordable 8-Voice 64-Program Polyphonic Synthesizer



## A Close Look at POLY-800 Features

### 1 VOLUME

Also turns on power.

### 2 TUNE

Slider provides easy tuning to other instruments.

### 3 JOYSTICK

Left & right motion bends the pitch of any notes played. Up & down motion produces vibrato and filter modulation effects.

### 4 BEND

Sets maximum pitch bend depth.

### 5 SEQUENCER

### J VALUE

Shows value for selected parameter; can be changed by Up and Down buttons.

### K BANK HOLD

Allows quick single-button access to programs or parameters within the same bank.

### L DISPLAY

6 large LED digits provide complete data read out.

### 8 PARAMETER TABLE

Displays all POLY-800 program parameters (Waveform, Cutoff frequency, etc.) which are used to create different

## 6 Parameter Digital Envelope Generators for Most Flexible Articulation

### Newly Developed ADBSSR System

See graphs below.

### 1 ATTACK

Rate at which the maximum peak is reached.

### 2 DECAY

Rate used to travel from the attack peak to the Break Point level.

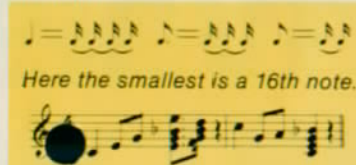
### 3 BREAK POINT

## Built-in Polyphonic Sequencer for Automatic Play

### Writing Sequences

Determine smallest time value. This will be the value of one STEP.

Example:



- 1) Set rear panel Sequencer WRITE switch to ENABLE position.
- 2) Press START/STOP.

## Create Original Sounds Quickly & Easily

- 1) Choose a program from the memory that is reasonably close to the sound you want.
- 2) Press PROG/PARA to select the Parameter mode (numbers appear in Parameter no. and Value displays).
- 3) Select a Parameter Number from the Parameter Table and enter it using the eight number buttons (for example, VCF Cutoff is 41).

type of record jack.

2) Set tape recorder volume to medium level.

3) Set rear panel TAPE and WRITE switches to ENABLE positions.

4) Press front panel LOAD button.

5) Start tape playback.

6) Display will show "Good" if data loading was successful.

7) Stop tape and set rear panel TAPE and WRITE switches to DISABLE positions.

8) If display shows "Err" (for error), press CANCEL and try again with tape volume at a different level. Repeat steps 3-5.

ATTACK	DECAY	BREAK P.	SLOPE	SUSTAIN	RELEASE	ATTACK	DECAY	BREAK P.	...
51	52	53	54	55	56	61	62	63	...
31	31	31	31	31	31	31	31	31	...
0	0	0	0	0	0	0	0	0	...

Parameter name  
Parameter number  
Value range  
Synthesizer section