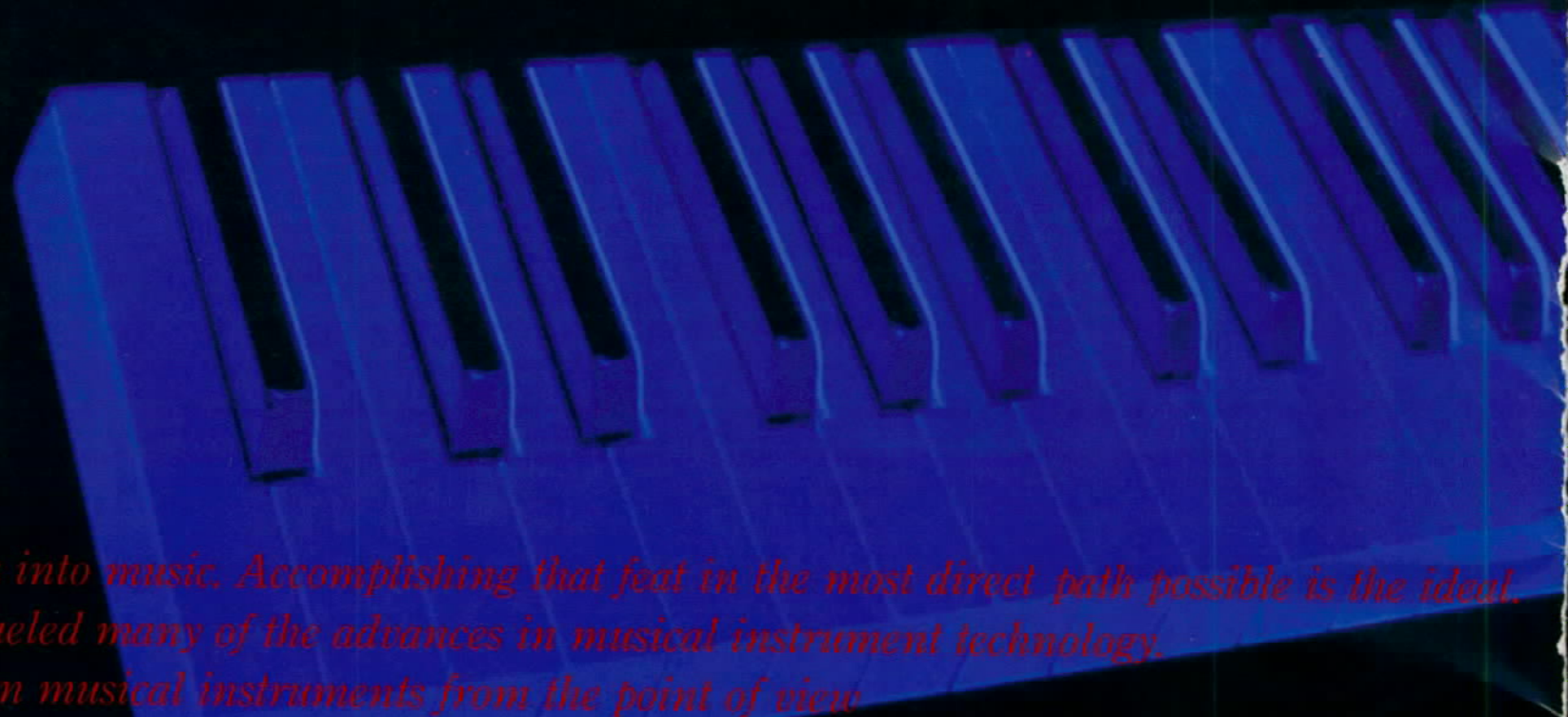


*THE KORG PROFESSIONAL
PERFORMANCE SERIES*

T-SERIES

T1 T2EX T3EX

KORG



Turning ideas into music. Accomplishing that feat in the most direct path possible is the ideal. And that ideal has fueled many of the advances in musical instrument technology.

We design musical instruments from the point of view

that they enhance the artist's conception, and not fight against it.

Korg translated this ambitious musical vision into reality when it developed the Music

The Workstation concept has grown and gained wide acceptance from the

The T-Series further closes this gap between the ideal concept and the actual instrument.

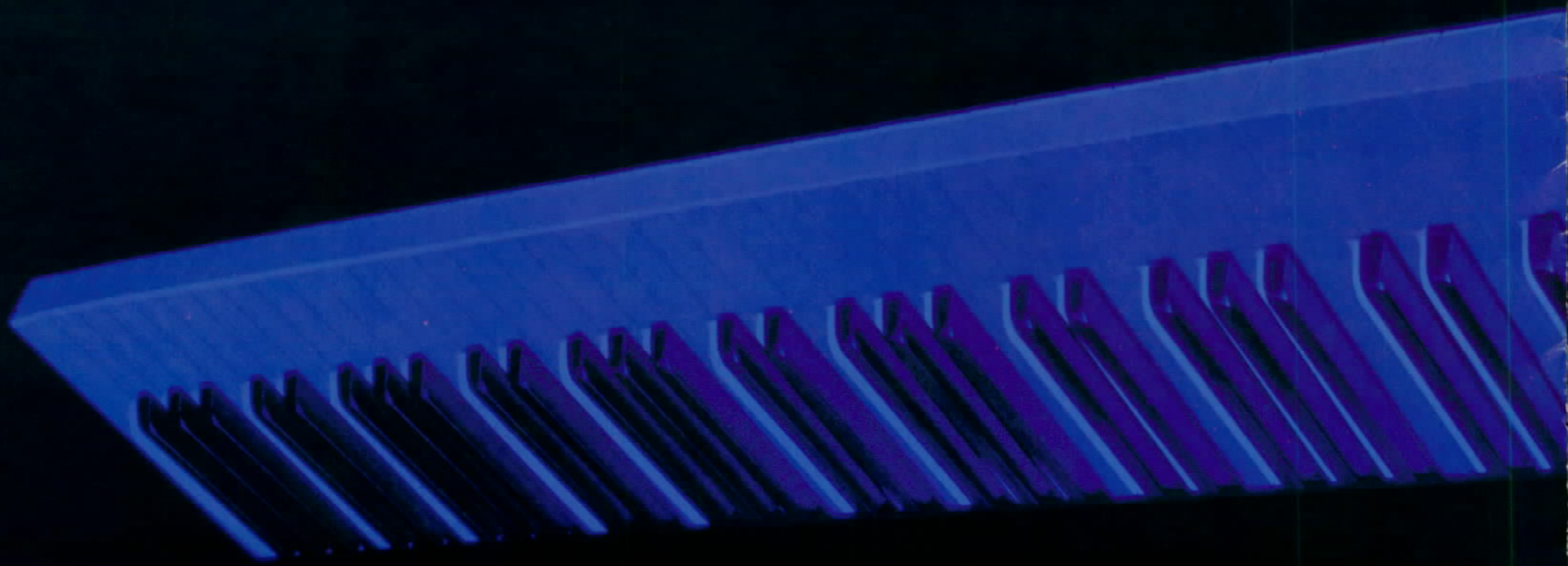
The comprehensive functions of the T-Series make it easy to translate imagination into and sounds into music—without difficulty, and above all, without compromise.

The ultimate music creation tools—the T-Series Music Workstations.

sounds,

creative people that use it.

Workstation.



Full Piano Keyboard with Top-of-the-line Features for Music Professionals.



AI Synthesis System

This is a state-of-the-art professional music system in a single instrument. The keyboard stretches out over a full 88 notes and features true piano touch response providing maximum expressive control where it really counts at your fingertips. Naturally, the expressive power of the synthesizer itself can be tailored to respond to all techniques and playing strengths—from pianissimo to fortissimo. The T1 gives you complete for dynamic control of external instruments and is ideal as a master keyboard. It also features built-in PCM RAM, making it possible to load samples from other equipment for further synthesizer processing. The T1 is the top-of-the-line instrument in the powerful T-Series, perfect for all professional music and production applications.

T1
MUSIC WORKSTATION

76-key Keyboard for Extensive Performance Capability.



 AI Synthesis System

The T2EX combines the functions and quality of the original T-Series with enhanced capabilities. The extended 76 note keyboard and the sophisticated Combination function provide flexible split keyboard operation—making the T2EX as a master MIDI keyboard as well as a sophisticated synthesizer. The greater keyboard range gives you more room to play and doesn't cramp your style. And many functions have been improved, including computing data for computer music. The T2EX also features built-in PCM RAM for loading sound data.

T2EX
MUSIC WORKSTATION

Comprehensive Functions in a Standard Stage Keyboard.



 AI Synthesis System

The T3EX is designed to bring the awesome sound and sophisticated functions of the T-Series to the stage. This standard-sized 61-key synthesizer is geared for portability in live performance situations, but its performance potential is anything but standard. It has, in a compact package all the functional advantages of the T-Series instruments, including PCM RAM. This T3EX embodies KORG's concept of the Music Workstation—giving musicians the tools to take raw ideas and develop them to their fullest, from basic sound to finished composition.

T3EX
MUSIC WORKSTATION

The AI Synthesis System

More than anything else, musical instruments should have great sound. AI Synthesis was developed with this principle in mind. The sounds start with high-quality 16-bit samples, and extend through digital processing, filtering and effects. This sonic quality has already established a high reputation for the AI Synthesis system among music professionals.

The AI Synthesis system incorporated in the T-Series instruments provides a large 4-megaword (8-megabyte) PCM ROM memory. A total of 275 original waveforms comprise the Multi-sounds, transient waveforms, DWGS waveforms and drum sounds, all which have been optimally recorded. The members of the T-Series are comprehensive musical instruments that provide a wide range of expressive power—featuring everything from accurate reproduction of acoustic sounds to the dynamic textures of wild synthesizer sounds. Ideal for use in professional recording studios where sound quality is of paramount importance, they also serve as powerful stage keyboards for an awesome live sound.

• Multisound Chart

00 Piano	21 Tubular	42 Lore	63 Pick	84 DWGS Bass1	105 Organ 4	126 Music Box	147 Clicker	168 WvSweep 2A
01 E. Piano 1	22 Bell Ring	43 Lore NT	64 Distortion	85 DWGS Bell1	106 PipeOrgn1	127 Toy Piano	148 Clicker NT	169 WvSweep 2B
02 E. Piano 2	23 Karimba	44 Flexatone	65 Dist NT	86 DWGS Orgn1	107 PipeOrg IA	128 Cymbell	149 Waterphone	170 MouthHrp1
03 Clav	24 KarimbaNT	45 Windbells	66 Bass Thumb	87 DWGS Orgn2	108 PipeOrgn2	129 Bellsynth	150 Bell Hit	171 MouthHrp2
04 Harpicaord	25 SynMallet	46 Pole	67 BasThumNT1	88 DWGS Voice	109 E. Guitar 2	130 BellsynthA	151 BellHit NT	172 MouthHrp2A
05 Organ 1	26 Flute	47 Pole NT	68 BasThumNT2	89 SquareWave	110 Harmonics	131 Timpani	152 Clang Hit	173 MouthHrp2A
06 Organ 2	27 Pan Flute	48 Block	69 Wire	90 Digital 1	111 E. Bass 2	132 Vocoder	153 ClangHrNT	174 Zawmul
07 MagicOrgan	28 Bottles	49 Block NT	70 Pan Wave	91 Saw Wave	112 Slap Bass	133 Da Voice	154 StickHit	175 Spectrum 1
08 Guitar 1	29 Voices	50 FingerSnap	71 Ping Wave	92 Digital 2	113 Round Bass	134 Da Voice	155 StickHrNT	176 Spectrum 2
09 Guitar 2	30 Choir	51 Pop	72 Fv Wave	93 25% Pulse	114 SynthBass3	135 Stringo 2	156 Block 2	177 Spectrum 4
10 E. Guitar	31 Strings	52 Drop	73 Mv Wave	94 10% Pulse	115 Mandolin	136 Stringo 3	157 Block 2 NT	178 Spectrum4NT
11 Sitar 1	32 Brass 1	53 Drop NT	74 Voice Wave	95 Digital 3	116 Banns	137 SoloString	158 Cabasa	179 Noise
12 Sitar 2	33 Brass 2	54 Breath	75 VoiceWvNT1	96 Digital 4	117 Harp	138 Hard Flute	159 Cabasa NT	180 Noise NT
13 A. Bass	34 Tenor Sax	55 Breath NT	76 VoiceWvNT2	97 Digital 5	118 Koto	139 Clarinet	160 Chortana	181 Perc. Wave
14 Pick Bass	35 Munc TP	56 Pluck	77 DWGS E.P. 1	98 DWGS TRI	119 Pick Piano	140 Alto Sax	161 Analog	182 Wire 2
15 E. Bass	36 Trumpet	57 Pluck NT	78 DWGS E.P. 2	99 DWGS Sine	120 PicPianoNT	141 Hard Sax	162 Piano Pad	184 16% Pulse
16 Fretless	37 TubaFlugel	58 Vibe Hit	79 DWGS E.P. 3	100 Piano 2	121 Stick	142 BaritoneSax	163 PianoPad A	185 8% Pulse
17 SynthBass 1	38 DoubleReed	59 VibHr NT	80 DWGS Piano	101 Soft E.P.	122 Marimba	143 Trombone	164 WaveSweep1	186 6% Pulse
18 SynthBass 2	39 KotoTrem	60 Hammer	81 DWGS Clav	102 Hard E.P.	123 Gamelan	144 FrenchHorn	165 WvSweep 1A	187 4% Pulse
19 Vibes	40 BambooTrem	61 Metal Hit	82 DWGS Vibe	103 Clav 2	124 Pot Covers	145 Harmonica	166 WvSweep 1B	188 2% Pulse
20 Bell	41 Rhythm	62 MetalHit NT	83 DWGS Bass1	104 Organ 3	125 PotCoverNT	146 Accordion	167 WaveSweep2	189 Saw Wave 2

Programs marked with "NT" have the same pitch throughout the range of the keyboard.

• Drum sound Chart

01 Kick 1	11 Closed HH 1	21 Claps	31 Drop	41 Tubular 4	51 Tight SD	61 Bell Ride	71 Bell Hit	81 Spectrum4L
02 Kick 2	12 Open HH 1	22 Tambourine	32 Vibe Hit	42 Bell Ring	52 Ambient SD	62 Ping Ride	72 Techno Zap	82 Spectrum4H
03 Kick 3	13 Closed HH 2	23 E. Tom	33 Hammer	43 Mtronoem 1	53 Synth SD	63 Bongo Low	73 Marimba	83 Noise
04 Snare 1	14 Open HH 2	24 Ride	34 Metal Hit	44 Mtronoem 2	54 Rim Shot	64 Bongo High	74 Gamelan 1	84 Perc. WaveH
05 Snare 2	15 Crash	25 Rap	35 Pluck	45 Pro BD	55 Stick Hit	65 Bongo Slap	75 Gamelan 2	85 Perc. WaveL
06 Snare 3	16 Conga 1	26 Whip	36 FlexaTone	46 Tight BD	56 AmbientTom	66 Caje 2	76 Potcover	
07 Snare 4	17 Conga 2	27 Shaker	37 Wind Bell	47 Punch BD	57 Closed HH 3	67 Maracas 1	77 Cymbell	
08 Side Stick	18 Timbales 1	28 Pole	38 Tubular 1	48 Synth BD	58 Open HH 3	68 Maracas 2	78 Timpani	
09 Tom 1	19 Timbales 2	29 Block	39 Tubular 2	49 Pro SD 1	59 Pedal HH	69 Cabasa	79 Clicker 1	
10 Tom 2	20 Cowbell	30 FingerSnap	40 Tubular 3	50 Pro SD 2	60 Clang Hit	70 Block 2	80 Clicker 2	

One of the main advantages of AI Synthesis is its logical sound shaping process. The system combines the best of two worlds—full digital control and processing, with conventional analog synthesizer structure and sound editing. Intuitive editing control of the VDF and VDA functions are provided for making sounds brighter, louder or fatter.

And all T-Series workstations are equipped with PCM RAM. Since all are compatible with the MIDI sample dump standard, sampled sound data can be loaded from sound library disks and other instruments and used as basic data for creating original programs.

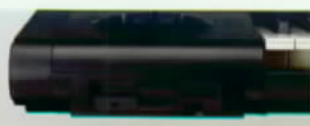
The Control Center of the Music Workstation—the Sequencer Section

The sequencer section—the nucleus of the T-Series' music workstation functions—has a recording capacity of 50,000 notes. Eight separate tracks can be used with the multi-timbral capability to play up to eight different sound programs.

Rough ideas are transformed almost instantaneously into finished compositions with the ease of recording and editing. Included among the sophisticated and convenient functions of the sequencer section are real-time recording, step recording, punch-in, copying, individual track volume control, transpose, panning, event edit, detune and balance, as well as editing of velocity and key window parameters.

Disk Storage of Program, Combination, Sequence and PCM Data—Built-in 3.5-inch 2HD Micro Floppy Disk Drive

The T1, T2EX and T3EX are all equipped with floppy disk drives for saving



program/combination/sequence/PCM data, vastly simplifying data storage "housekeeping" chores.

• Saving and Loading Program/Combination/Sequence Data

The T1, T2EX and T3EX can memorize up to 200 Programs and 100 Combinations. Moreover, four sequence data sets comprising 200 Programs, 100 Combinations, and 50,000 notes can be saved to and loaded from floppy disk.

• **Saving and Loading PCM Data/Program/Combination/Sequence Data**
PCM sound data created on the Korg DSM-1 Digital Sampling Synthesizer or stored on sound library Performance Disks can be loaded into the PCM RAM of the T-Series instruments.

The new sound source data can be used as internal PCM data for creation of new sound programs, extending the creative potential of AI Synthesis.

• MIDI Data Filer

The storage system can also function as a MIDI data filer by receiving system exclusive messages from other synthesizers and drum machines, and can save that data to disk. With this feature, the T-Series gives you a low-cost way to control the data of the many elements of your setup.

Independent Dual System Stereo Multi-effect Processing

The AI Synthesis system includes everything necessary for the shaping of sounds—right down to the effects. Only such an integrated system makes possible full completion of sound creation.

The members of the T-Series have dual-system stereo multi-effect programs that provide first-rate effects without diminishing the quality of the original sound source. Each digital multi-effect section has 33 effect programs, including stereo reverb, stereo delay, exciter and a rotary speaker effect. Moreover, a comprehensive set of adjustable parameters make it possible to fine tune the sound to the most demanding requirements. And just as with the VDF and VDA settings, effect settings are integrated into and stored with the sound program.



• T-Series Effect Variations

01 REVERB(HALL)	09 EARLY REF 3	17 PHASER 2	25 EXCITER
02 REVERB(ENSEMBLE HALL)	10 STEREO DELAY	18 STEREO TREMOLO 1	27 DELAY/ROOM
03 REVERB(CONCERT HALL)	11 CROSS DELAY	19 STEREO TREMOLO 2	28 DELAY/E. REF
04 REVERB(BROOM)	12 STEREO CHORUS 1	20 EQUALIZER	29 DELAY/DELAY
05 REVERB(LARGE ROOM)	13 STEREO CHORUS 2		30 DELAY/CHORUS
06 REVERB(LIVE STAGE)	14 STEREO FLANGER	21 OVER DRIVE	31 DELAY/FLANGER
07 EARLY REF 1	15 CROSS FLANGER	22 DISTORTION	32 DELAY/PHASER
08 EARLY REF 2	16 PHASER 1		33 DELAY/TREMOLO

Full-function Master Keyboard

The T-Series instruments are equipped with one MIDI IN, one MIDI THRU, and two independent pairs of MIDI OUTs, allowing communication over 32 independent MIDI channels.

A maximum of 8 internal "timbres" and 8 externally connected MIDI devices can be set up simultaneously with individual program numbers, MIDI volume, key windows, etc., by simply executing a Combination change. Serving as a unified control center for a sophisticated MIDI system, the T-Series keyboards also provide independent velocity and after touch curves for each internal and external "timbre". Sequencer playback is capable of independently outputting MIDI play data over the A system and B system.

Since MIDI channels 1 through 16 can be used from each system, 8 channels can be selected from a total of 32, allowing flexible two-system control over external sound sources.

Continuously Expanding T-Series Software Library

The following series of floppy disks, with specially recorded PCM data and accompanying Programs, are being released.

<TSD series>Synthesizer•Drums•Combination 1-3•Fretted Instruments

Ethnic•Sound Effects•Environment•Voice•Others

Compatibility with M1 & MIREX Software

PCM cards and Program cards used with the popular Korg M1 & MIREX Music Workstations can be used for the T-Series instruments as well. The rich sounds of the MSC series as well as Various sounds programmed by third party software developers are also compatible with the T-Series.



① PCM DATA SLOT ② PROGRAM DATA SLOT ③ MIDI THRU JACK ④ MIDI OUT B JACK×2 ⑤ MIDI OUT A JACK×2 ⑥ MIDI IN JACK ⑦ CONTRAST ⑧ DAMPER ⑨ ASSIGNABLE PEDAL/SWITCH JACK ⑩ OUT PUT JACK×4 ⑪ HEADPHONE

T1, T2EX, T3EX/Specifications

● System: AI-synthesis system (full digital processing) ● Tone generators: 16 voices, 16 oscillators (single mode), 8 voices 16 oscillators (double mode) ● Keyboard: T1/88 keys, T2EX/76 keys, T3EX/61 keys, initial and aftertouch ● Wave memory: T1, T2EX, T3EX PCM ROM 4M word (8M byte) + PCM RAM 512K word (1 Mbyte) ● Tone generator quantization: 16bit ● Effects: Two digital multi-effect units ● Number of programs: 200 Programs ● Number of Combinations: 100 Combinations ● Sequencer section: 20 songs, 200 patterns, maximum 50,000 notes, 8 tracks, 8 multi-timbres (dynamic voice allocation) ● Control inputs: Damper pedal, assignable footswitch (pedal) 1/2 ● Outputs: 1/L, 2/R, 3, 4, headphone ● Floppy disk drive: 3.5inch, 2HD PCM data, Program/Combination/Sequence data ● Card slots: PCM data, Program/Combination/Sequence data ● MIDI: IN, OUT A (2), OUT B (2), THRU ● Display: 64×256 full dot matrix backlit LCD ● Power consumption: 15W ● Dimensions: T1 1475(W)×507(D)×135.5(H)mm, T2EX 1268.3(W)×355(D)×111.5(H)mm, T3EX 1058(W)×355(D)×111.5(H)mm ● Weight: T1 35Kg, T2EX 15.5Kg, T3EX 13.6Kg

T1, T2EX, T3EX/Options

- RAM CARD MCR-03
- PEDAL SWITCH PS-1/PS-2
- DAMPER PEDAL DS-1
- FOOT CONTROLLER EXP-2/KVP-002
- CONTROL WHEEL WK-T1 (For T1)
- HEAD PHONE KH-1000
- STAND ST-T1 (For T1)/ST-LV (For T2EX, T3EX)
- SYNC/MIDI CABLE
- CASE (For T1) Flight case FC-T1
- CASE (For T2EX) Flight case FC-T2/Hard case HC-T2
- CASE (For T3EX) Flight case FC-M1/Hard case HC-M1
- T-Series Sound Library (TSD-Series)
- M1/MIREX Sound Library (MSC-Series/MPC-Series)



● DAMPER PEDAL DS-1



● RAM CARD MCR-03



● HEADPHONE KH-1000



● CONTROL WHEEL WK-T1



● PEDAL SWITCH PS-2



● FOOT CONTROLLER EXP-2

● The EXK-T RAM expansion kit (512 K-words) makes it possible to upgrade the T2 and T3 to the capacity of the T2EX and T3EX.

THE KORG PROFESSIONAL
PERFORMANCE SERIES

T-SERIES

T1 T2EX T3EX



● Specifications and features are subject to change without notice for further improvement. ● Color reproduction in printed materials may differ from actual product appearance.

NOTICE

Korg products are manufactured under strict specifications and voltages required by each country. These products are warranted by the Korg distributor only in each country. Any Korg product not sold with a warranty card or carrying serial number disqualifies the product sold from the manufacturer's/distributor's warranty and liability. This requirement is for your own protection and safety.

KORG

KORG INC. 15-12, Shimotakaido 1-Chome, Suginami-ku, Tokyo, Japan.